

Airbus

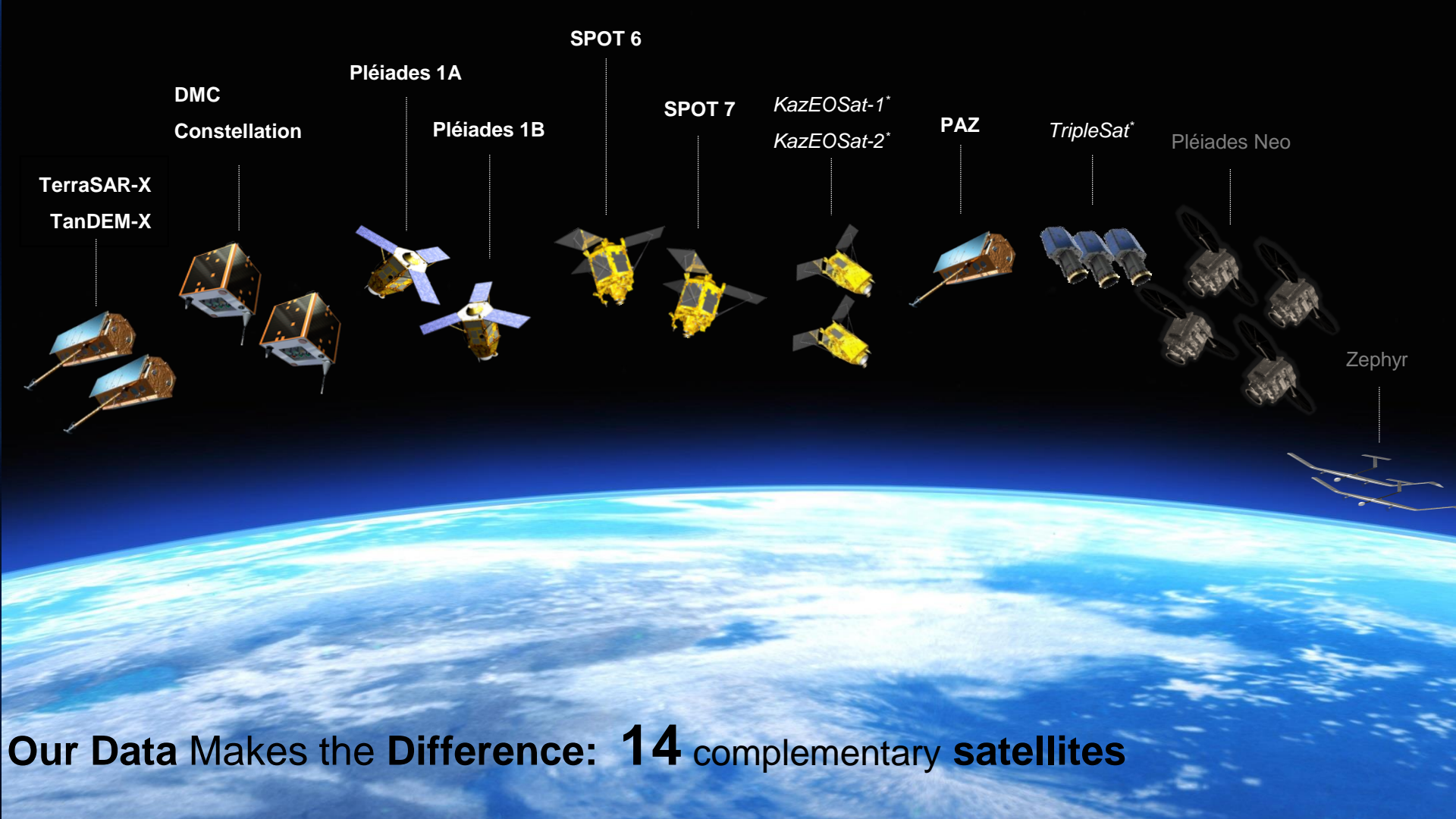
Trusted Intelligence

40.437°N
23.642°W

TALLY#:
1. VESSEL #13748-1283
2. VESSEL #46396-3487
3. VESSEL #90547-3486
4. VESSEL #16963-6475
5. VESSEL #90047-1784

40.427°N
23.642°W

PIER#:
148.27884955 - 0200W
234.45789950 - 1480



TerraSAR-X
TanDEM-X

DMC
Constellation

Pléiades 1A

Pléiades 1B

SPOT 6

SPOT 7

KazEOSat-1*
KazEOSat-2*

PAZ

TripleSat*

Pléiades Neo

Zephyr

Our Data Makes the Difference: **14** complementary **satellites**

PLÉIADES NEO

4-SATELLITE
CONSTELLATION

DESIGNED FOR A

10-YEAR

NOMINAL LIFETIME

100% COMMERCIAL
FUNDED BY AIRBUS

An aerial photograph of a city intersection, likely in Paris, showing a roundabout and surrounding streets with cars and buildings. A blue location pin icon is placed in the center of the roundabout.

SHARP

<5m

NATIVE LOCATION ACCURACY

PLÉIADES NEO DELIVERS

30CM RESOLUTION
IMAGERY

AIRBUS

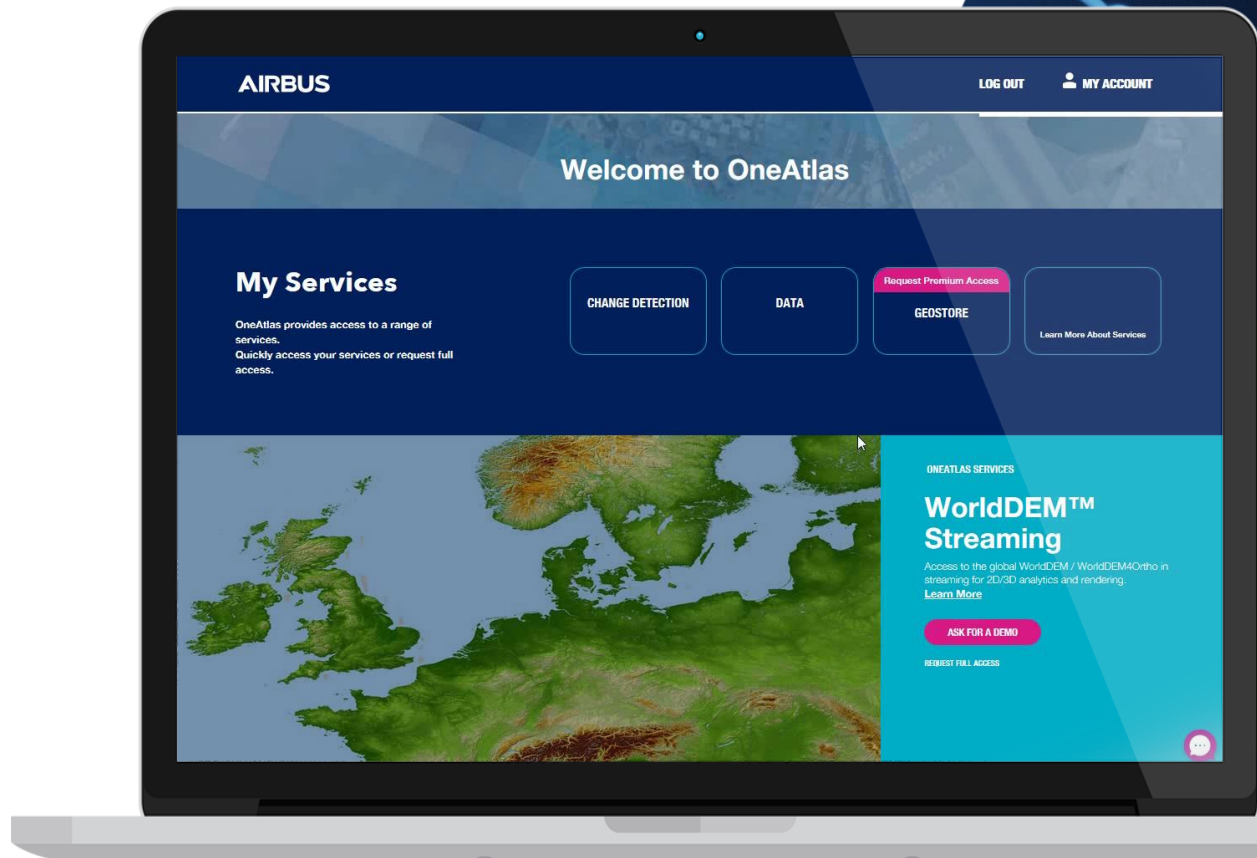
An aerial photograph of a city, likely Paris, showing a large central building with a glass dome and several circular structures. The surrounding area is filled with buildings and streets. The vegetation, including trees and lawns, is highlighted in a vibrant red color, contrasting with the natural colors of the buildings and streets. The text 'SHARP' is in the top left, and 'PLÉIADES NEO DELIVERS 6 MULTI SPECTRAL CHANNELS' is in the bottom left.

SHARP

PLÉIADES NEO DELIVERS

**6 MULTI SPECTRAL
CHANNELS**

All in one place



OneAtlas platform

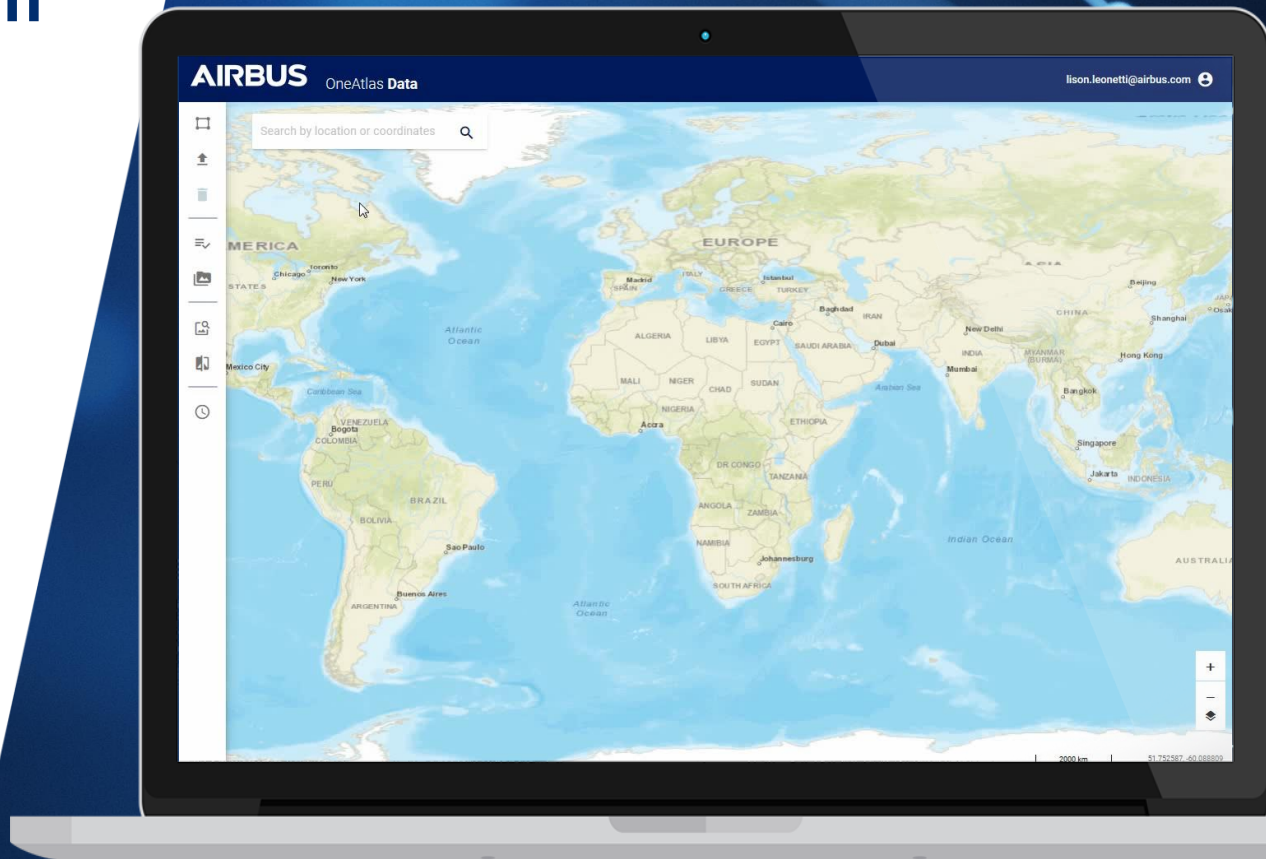
LAYERS

Fresh Imagery

Basemap

WorldDEM™ Streaming

ANALYTICS



IMAGERY

Immediate access to a selection of premium Airbus imagery

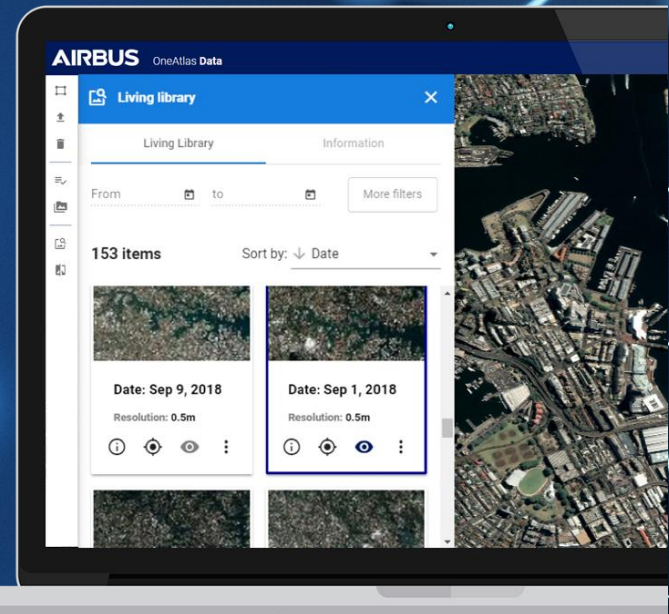
Multi-resolution, premium imagery, constantly updated

Fresh premium Archive

Annual Subscription

Flexible Delivery & Formats

Cloud API integration



API: GetBuffer (proprietary, WCS-like)

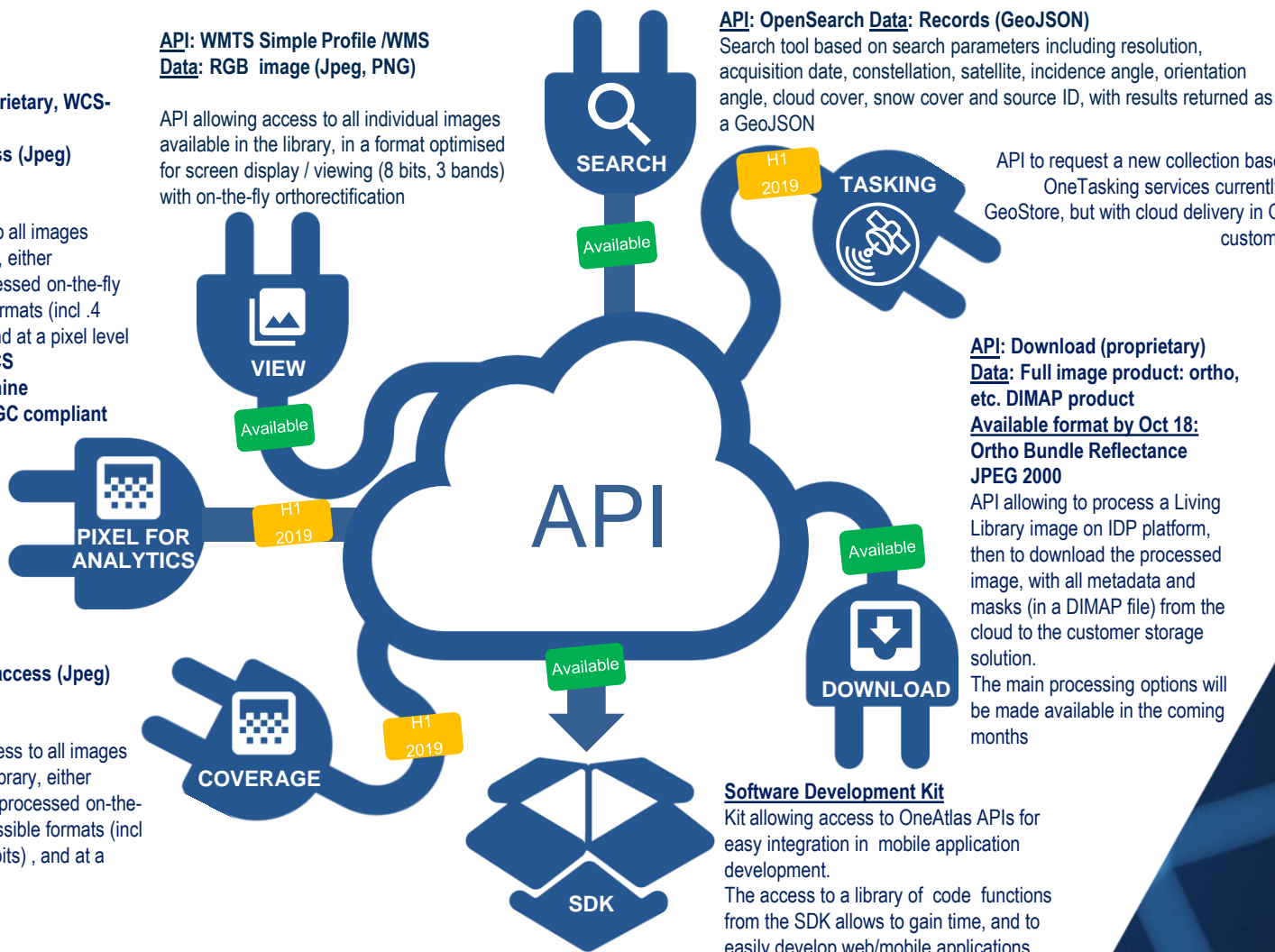
Data: Full data access (Jpeg) (no metadata)

API allowing access to all images available in the library, either unprocessed or processed on-the-fly in different possible formats (incl .4 bands, 12/16 bits) , and at a pixel level
Simpler API than WCS
For Machine to Machine
Not Interoperable/OGC compliant

API: WMTS Simple Profile /WMS

Data: RGB image (Jpeg, PNG)

API allowing access to all individual images available in the library, in a format optimised for screen display / viewing (8 bits, 3 bands) with on-the-fly orthorectification



API: OpenSearch Data: Records (GeoJSON)

Search tool based on search parameters including resolution, acquisition date, constellation, satellite, incidence angle, orientation angle, cloud cover, snow cover and source ID, with results returned as a GeoJSON

API to request a new collection based on existing OneTasking services currently available on GeoStore, but with cloud delivery in OneAtlas Data customer workspace

API: Download (proprietary)
Data: Full image product: ortho, etc. DIMAP product
Available format by Oct 18:
Ortho Bundle Reflectance
JPEG 2000

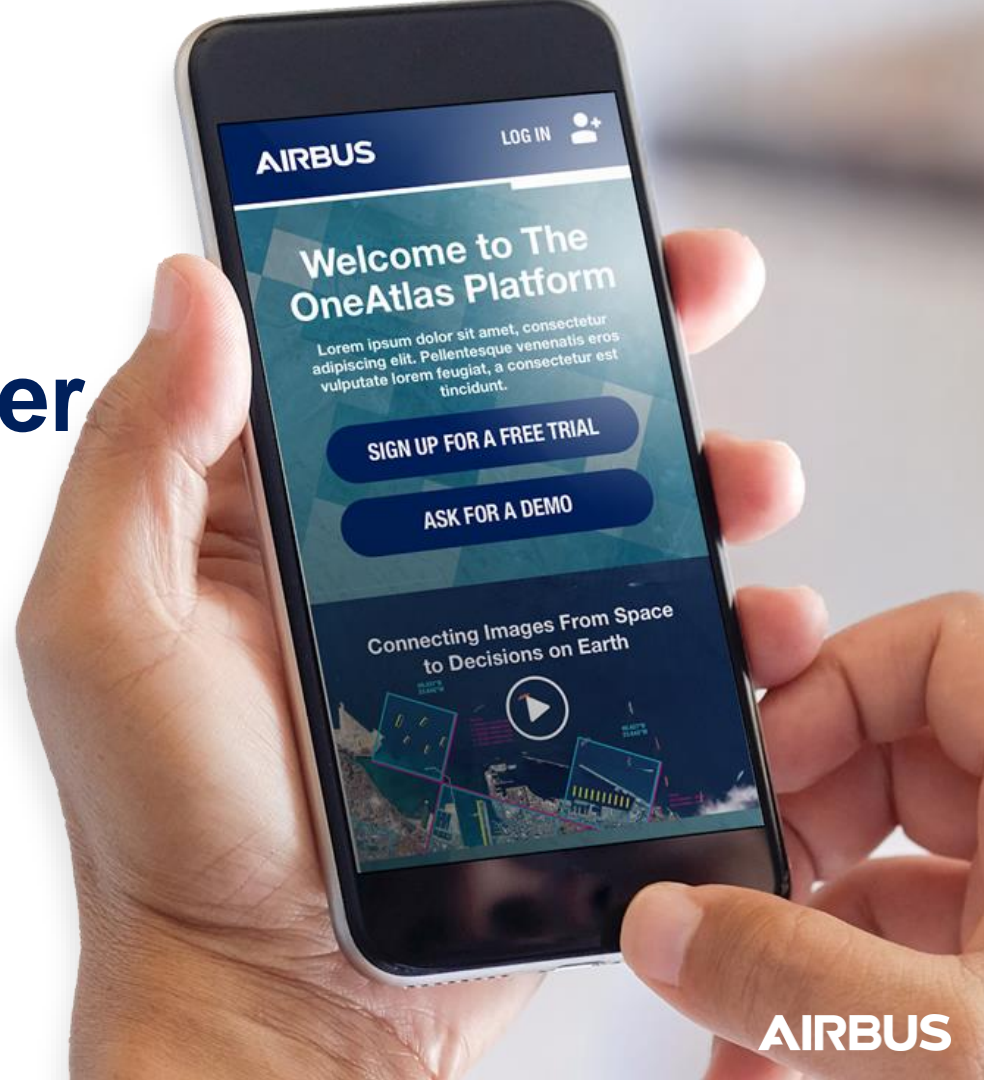
API allowing to process a Living Library image on IDP platform, then to download the processed image, with all metadata and masks (in a DIMAP file) from the cloud to the customer storage solution.
The main processing options will be made available in the coming months

Software Development Kit

Kit allowing access to OneAtlas APIs for easy integration in mobile application development.

The access to a library of code functions from the SDK allows to gain time, and to easily develop web/mobile applications

Instant access to satellite imagery over anywhere in the world.



Thank You

40.437°N
23.642°W

TALLY#:

1. VESSEL #13748-1283
2. VESSEL #48596-3467
3. VESSEL #90547-3485
4. VESSEL #18993-B475
5. VESSEL #99947-1764

PIER#:
145.27884955 - Q89W
234.45789960 - Y46K

40.427°N
23.642°W