



AfricaGIS 2019

Innovations in Geospatial Technologies for Achieving Sustainable Development Goals in Africa

Kigali Conference and Exhibition Village, Rwanda
18 - 22 November 2019



UNIVERSITY of
RWANDA

USING GEO-INFORMATION TECHNOLOGY FOR ASSESSMENT OF BASIC INFRASTRUCTURE SERVICE PROVISION:

CASE OF DRINKING WATER SUPPLY IN NYAMIRAMBO, KIGALI

By **BARIFASHE Theodomir (Msc)**

Department of Geography & Urban Planning

SABE/CST/UR



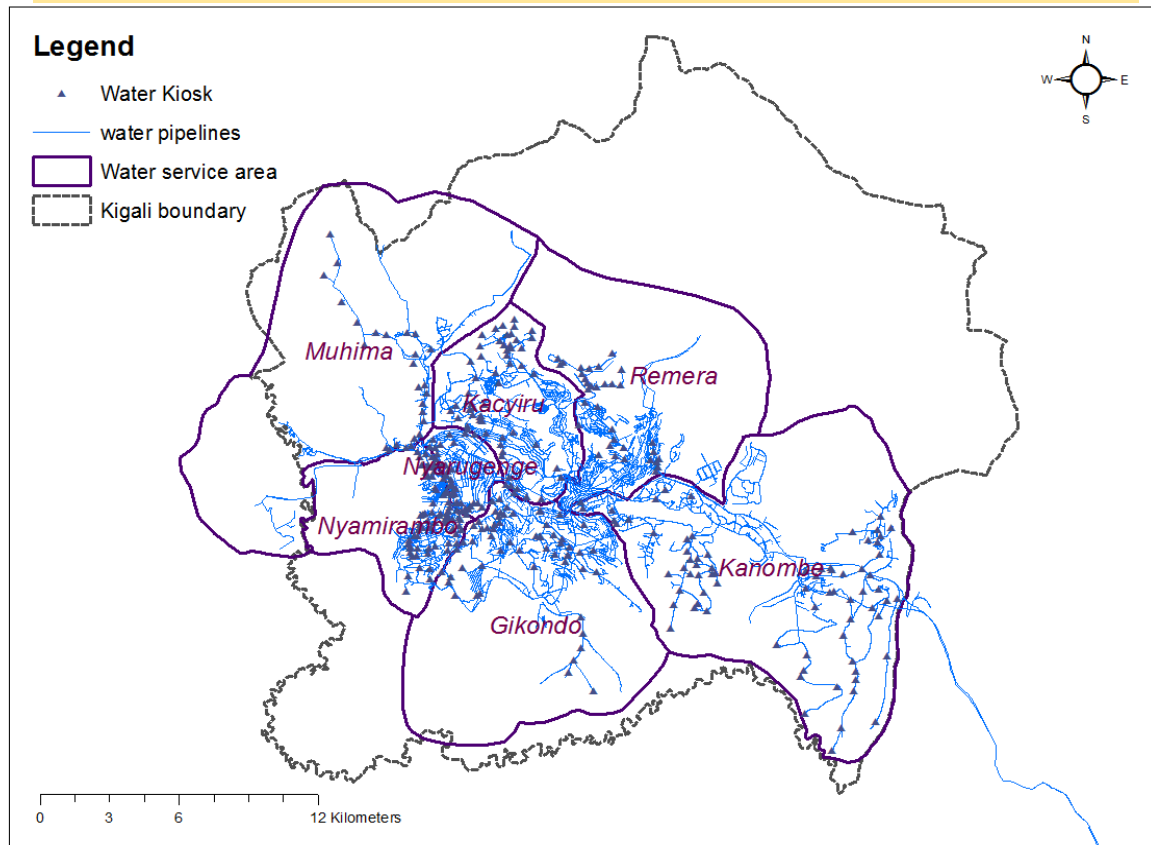
Challenge of infrastructure service provision

- Fast growing cities in developing countries
- Urban sprawl & population growth
- High rise of demand in urban services vs. slow development of urban infrastructure
- Decreased capacity of urban infrastructure service provision
- Spatial disparities in service provision
- Need of appropriate spatial decisions



DRINKING WATER SUPPLY IN KIGALI

Uneven pattern of water supply infrastructure!



Where the intervention is needed?



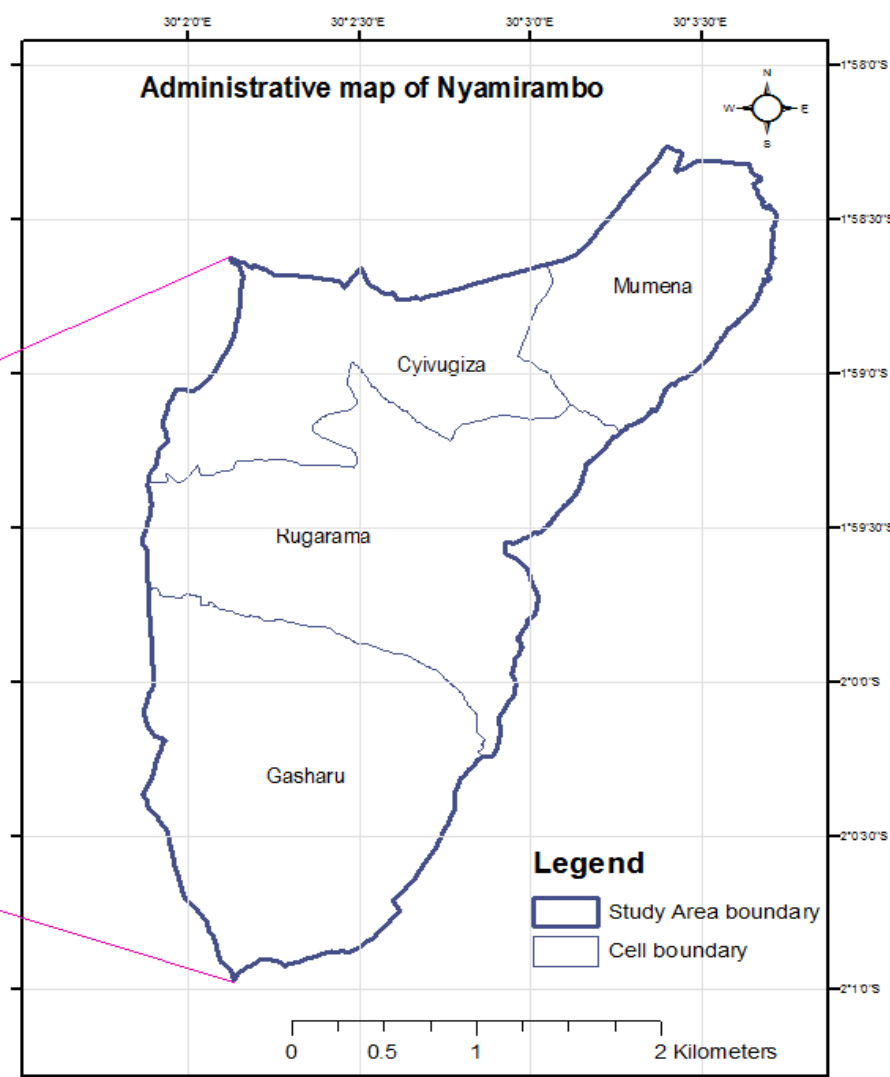
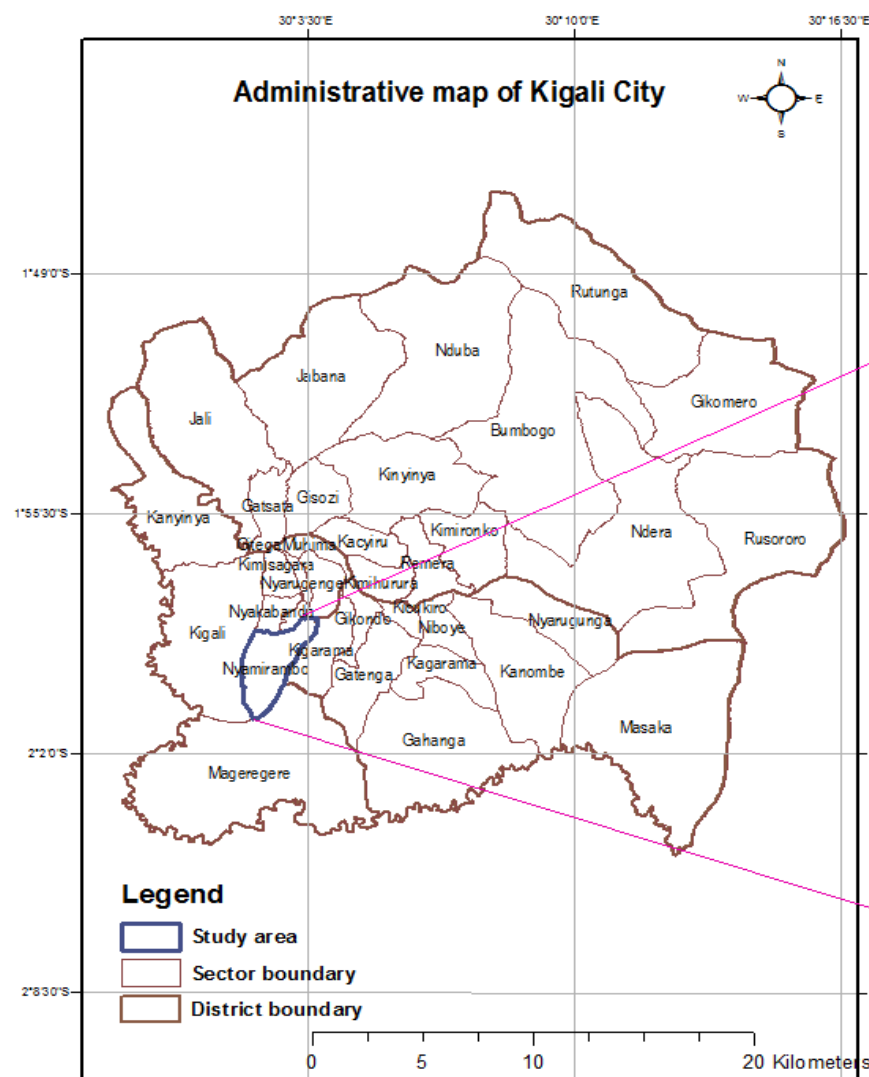
AfricaGIS 2019

Innovations in Geospatial Technologies for Achieving Sustainable Development Goals in Africa

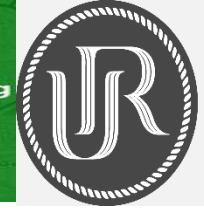
Kigali Conference and Exhibition Village, Rwanda
18 – 22 November 2019



UNIVERSITY of
RWANDA

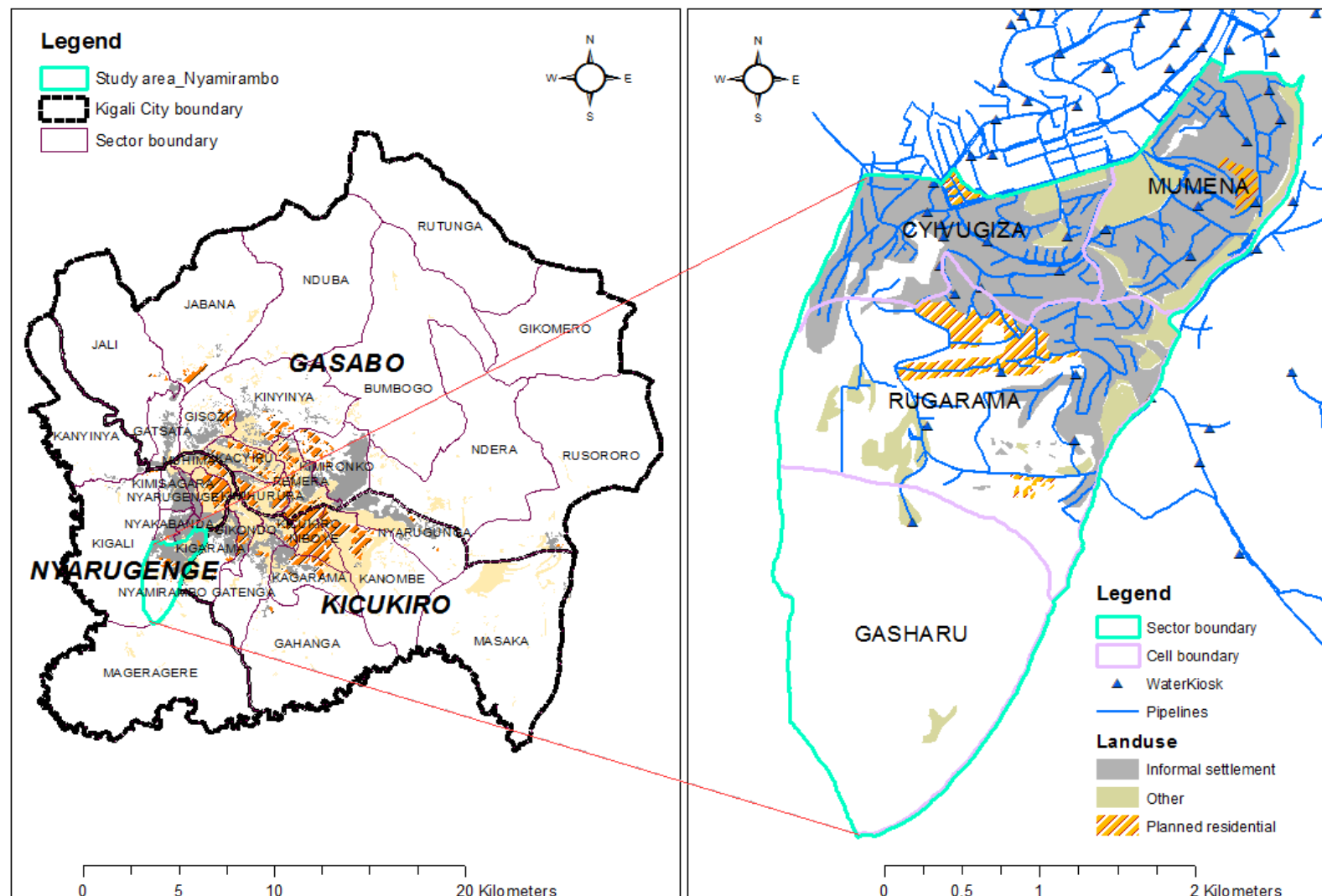


The study area

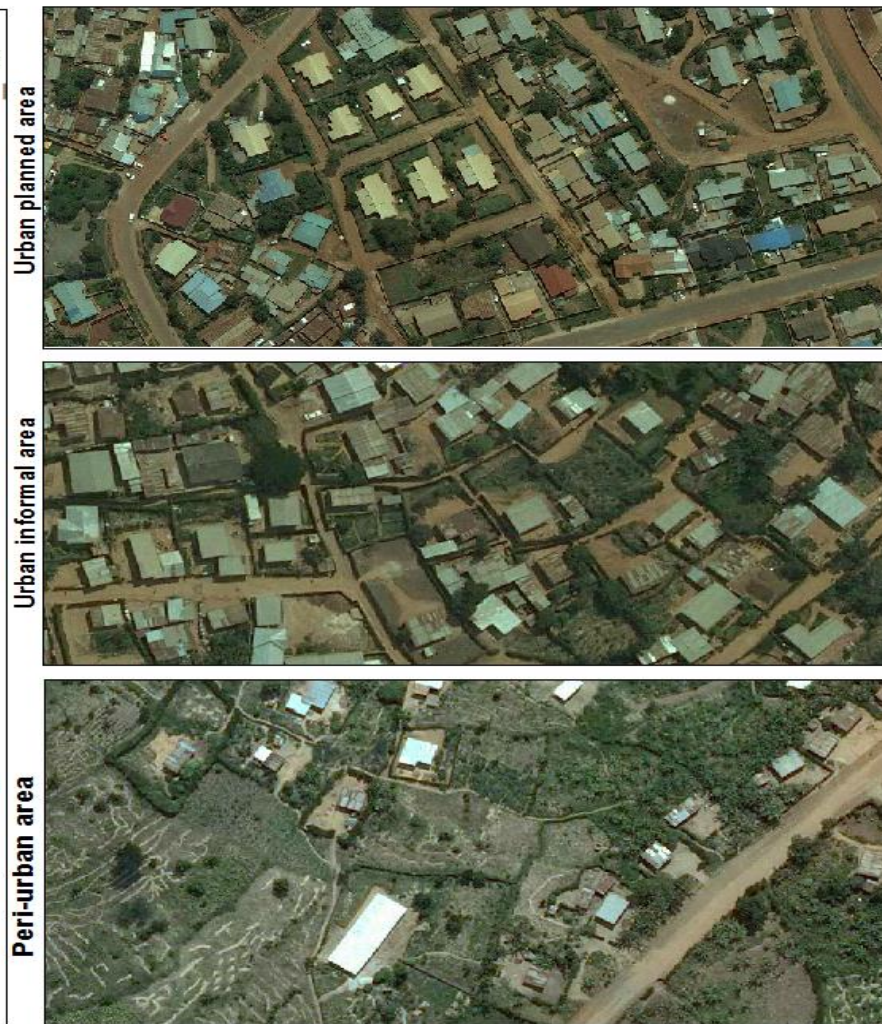
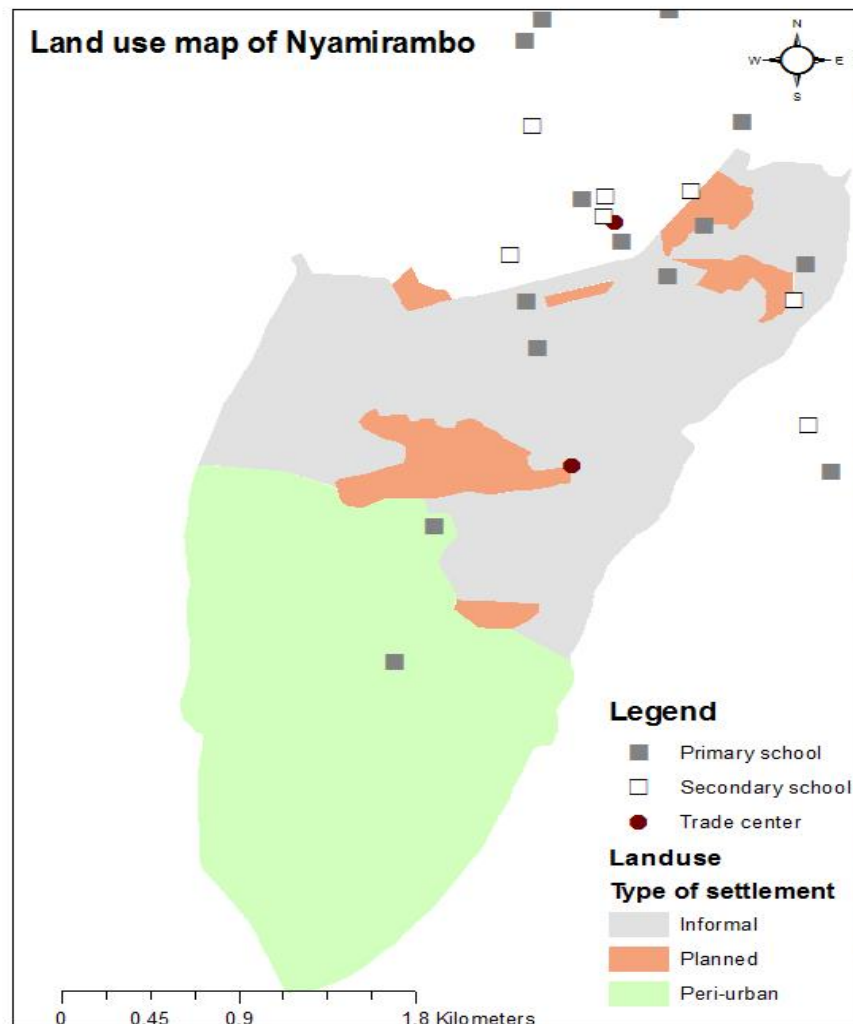


Geo-information technology and selection of the study area

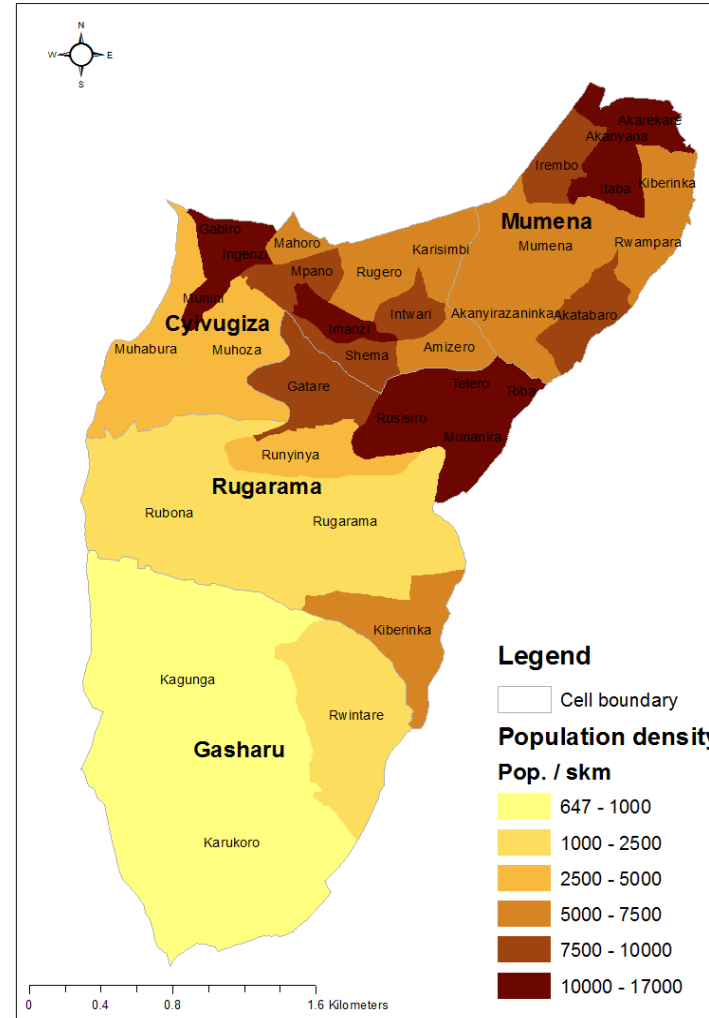
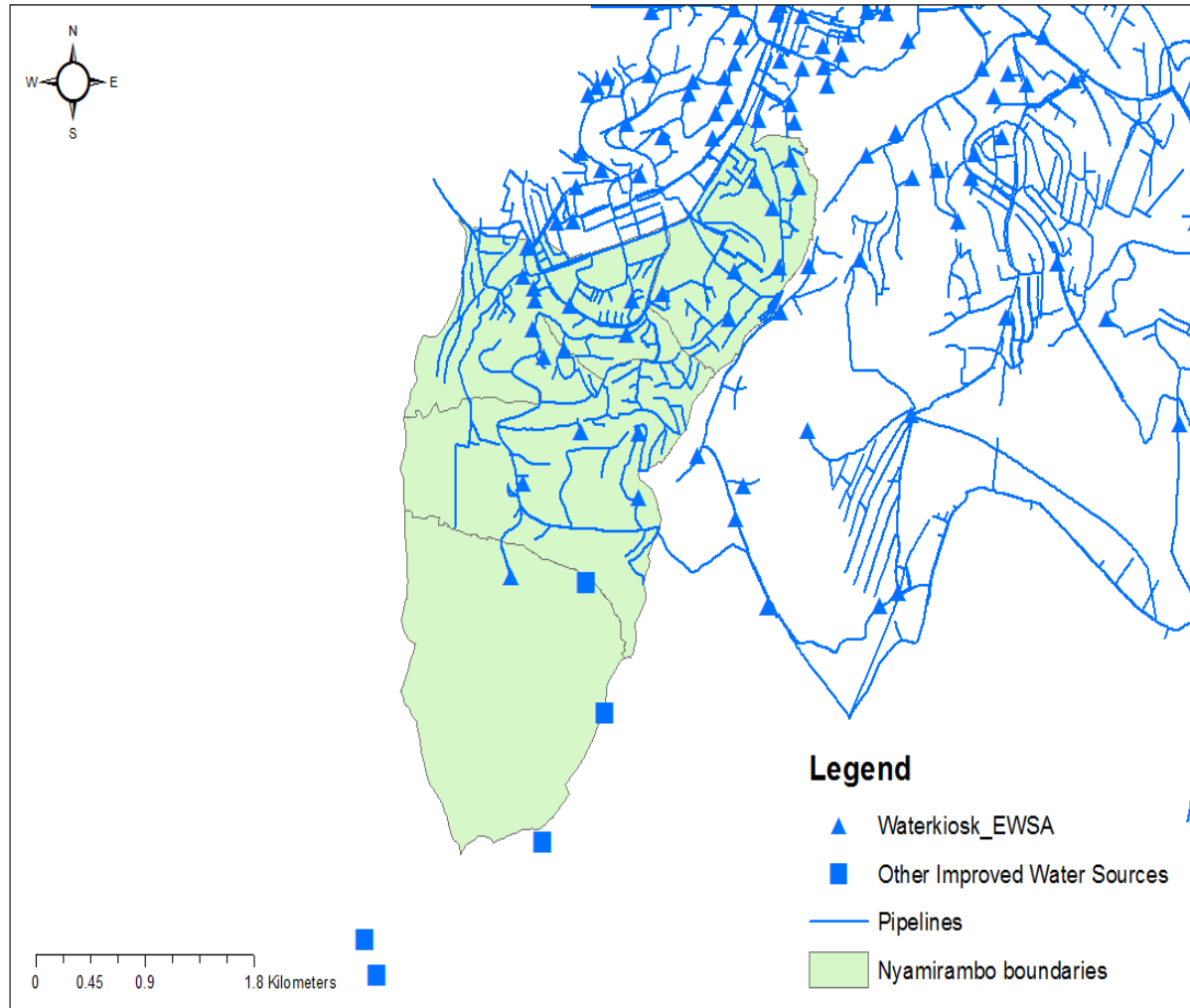
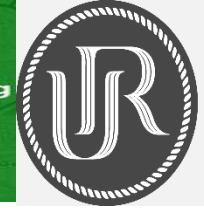
- typical urban and rural area of Kigali city;
- illustration of the contrast of population density (700 to 17,000 inhabitants per square km) and life style of Kigali city;
- a diversity of human settlements (urban “planned, informal” vs. peri-urban/rural) of Kigali Kigali;
- a disparity of water supply infrastructure: spatial dissimilarity of concentration of water supply infrastructure



Nyamirambo sector is the sector whose characteristics reflect those of Kigali City



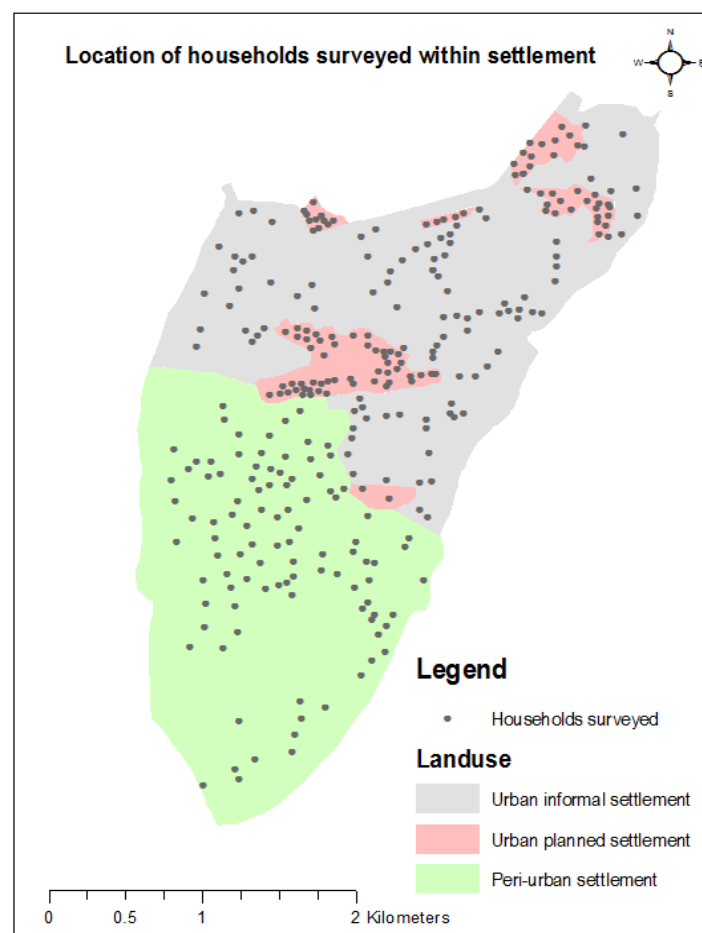
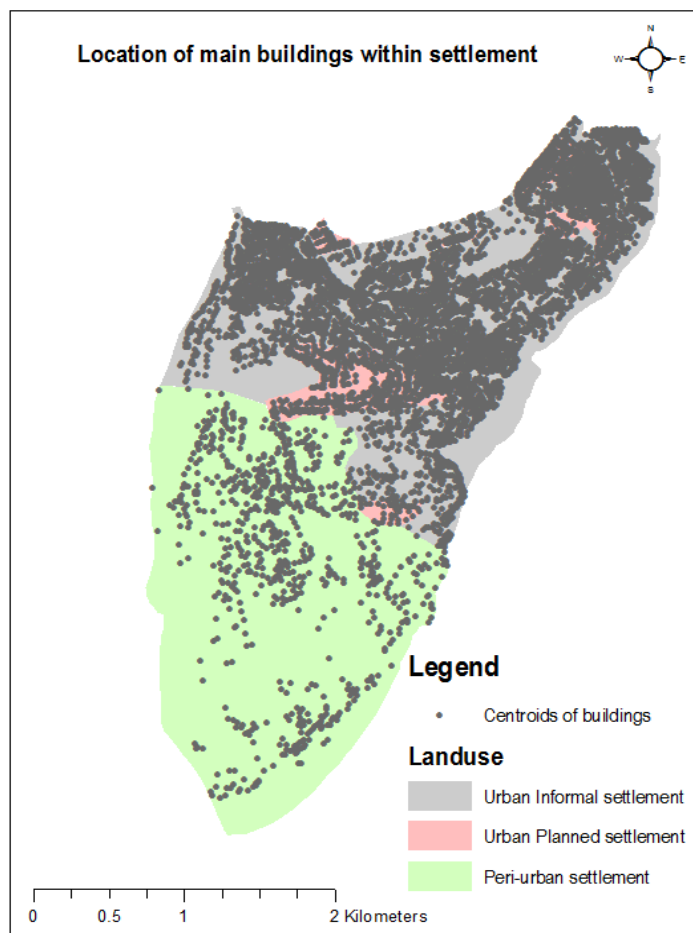
Nyamirambo sector is the sector whose characteristics reflect those of Kigali City



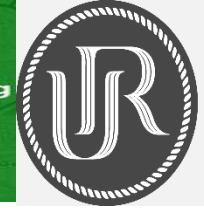
Nyamirambo sector is the sector whose characteristics reflect those of Kigali City



Geo-information Technology and sampling



- Within each type of settlement, 100 households were randomly selected
- Location of households were extracted from aerial photographs

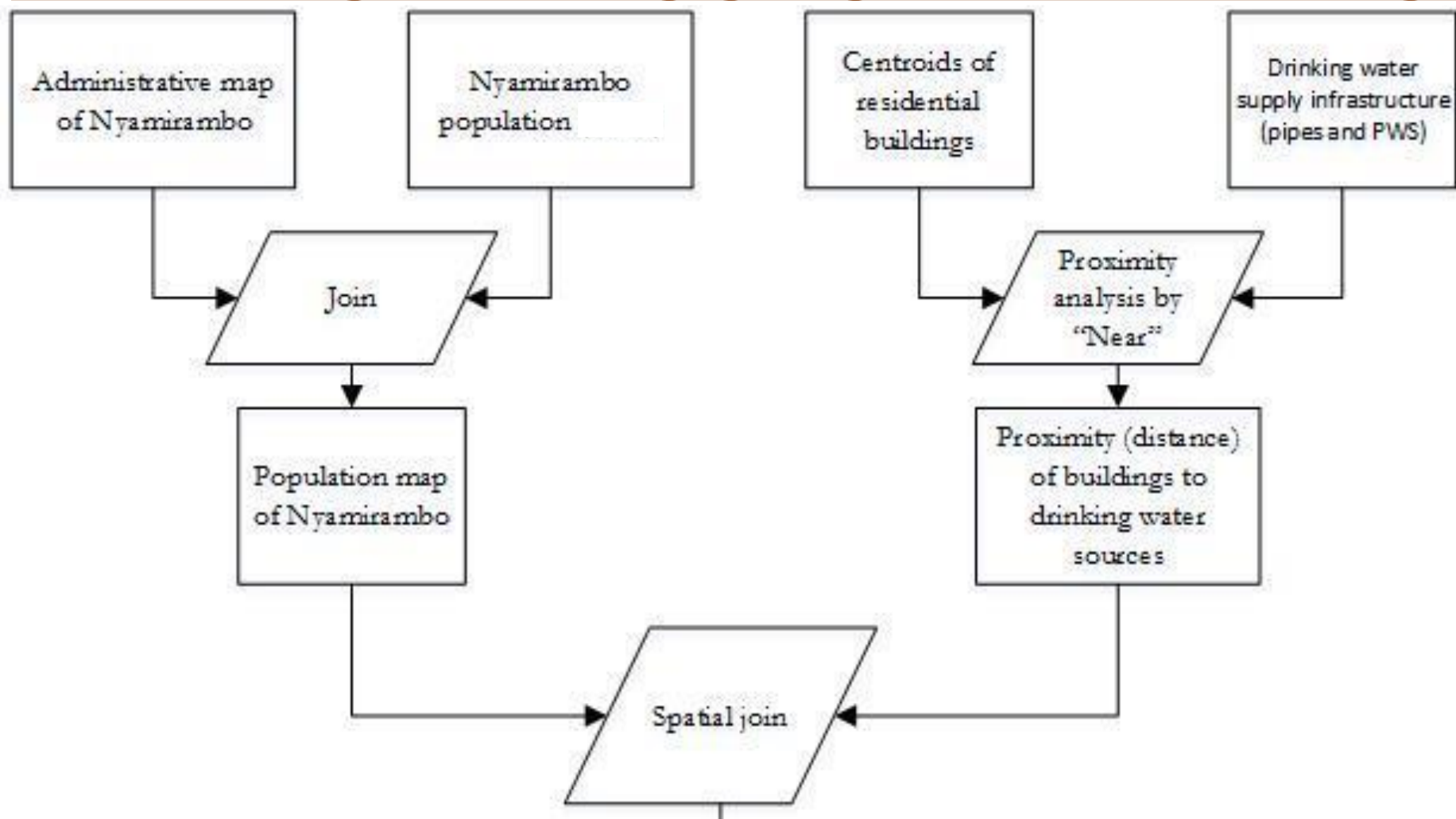


Geo-information and data collection

- Selected households were visualized on a map having an aerial photograph as background to ease their identification for the surveyors
- GPS receivers were used to locate:
 - a) new improved water sources (not included in the existing geodatabase), and
 - b) households investigated.

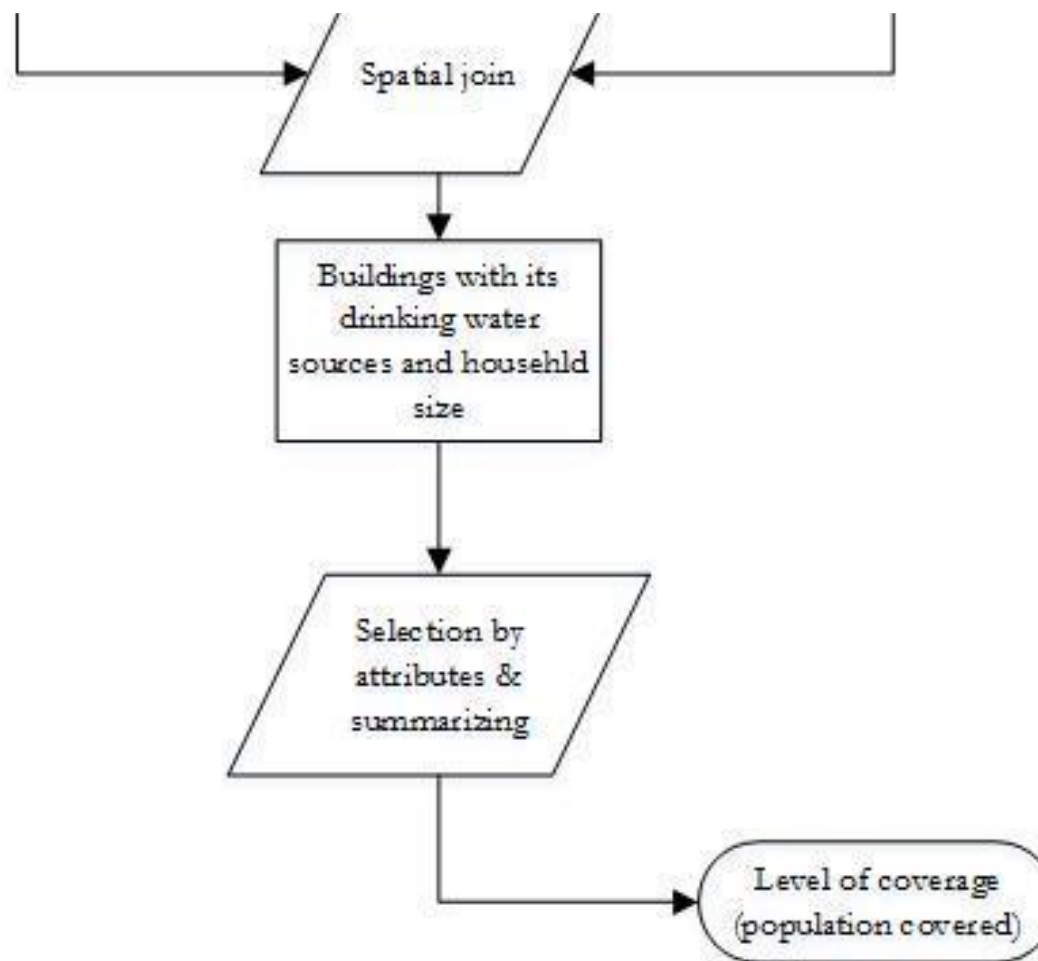


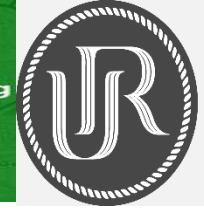
Steps for generating geographical coverage



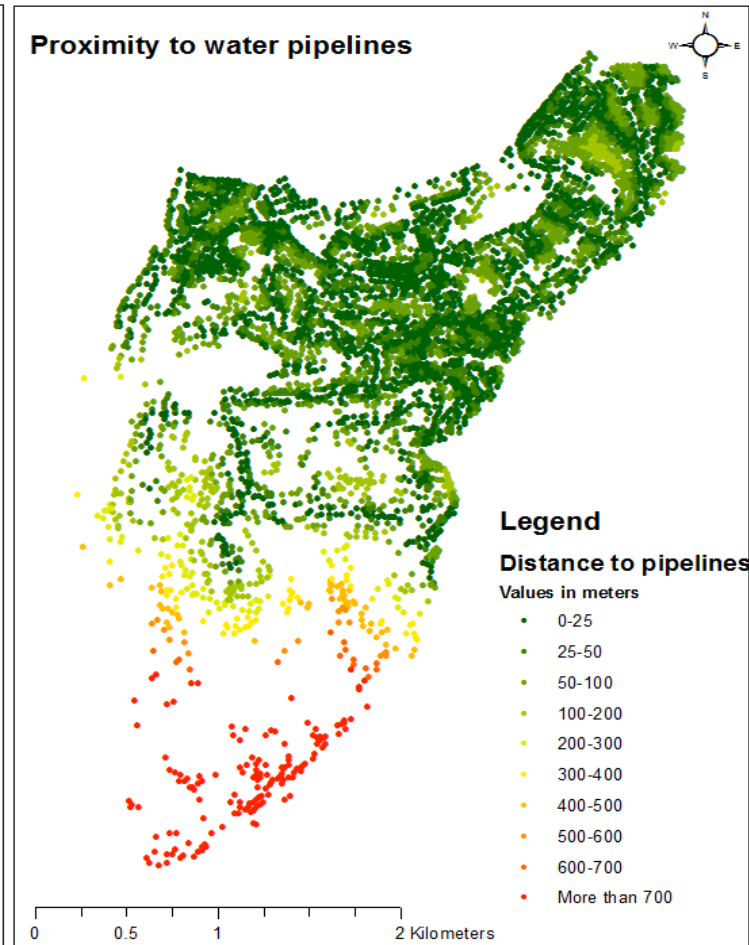
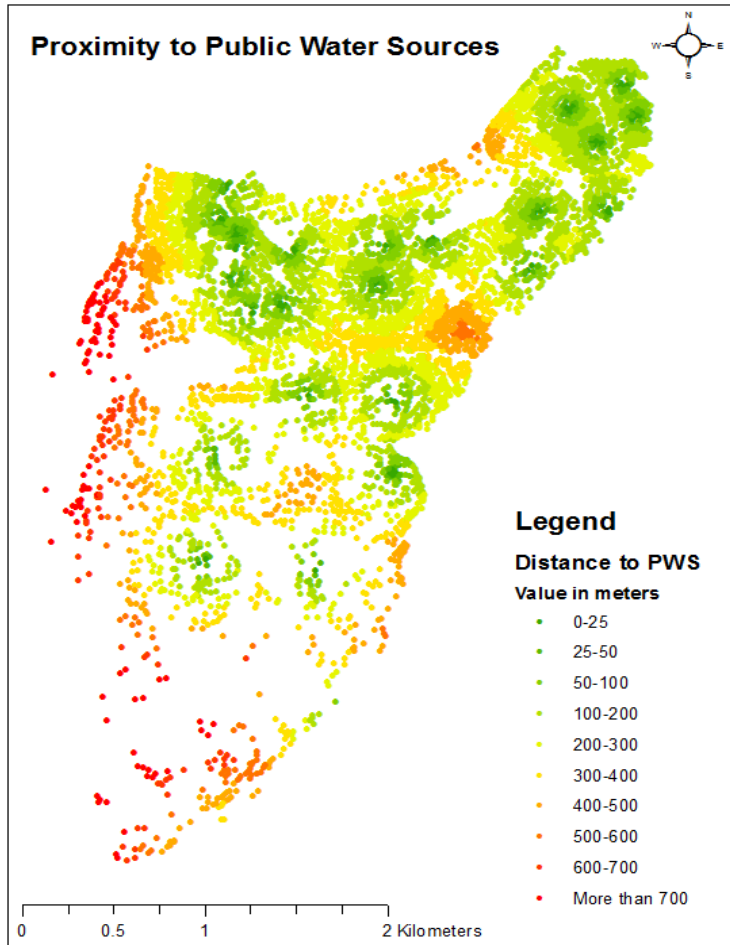


Steps for generating geographical coverage (cont'd)





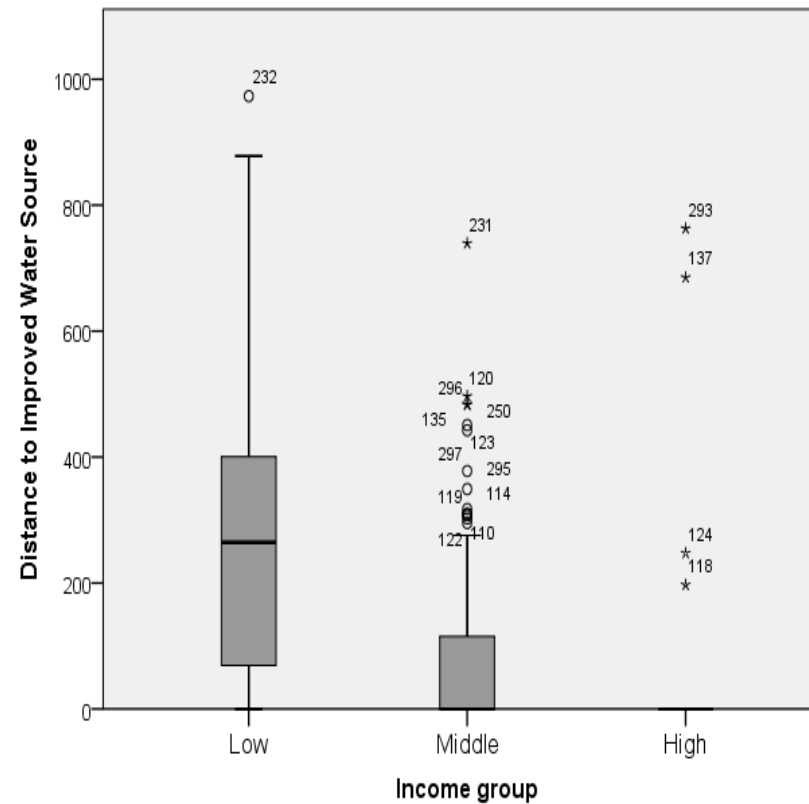
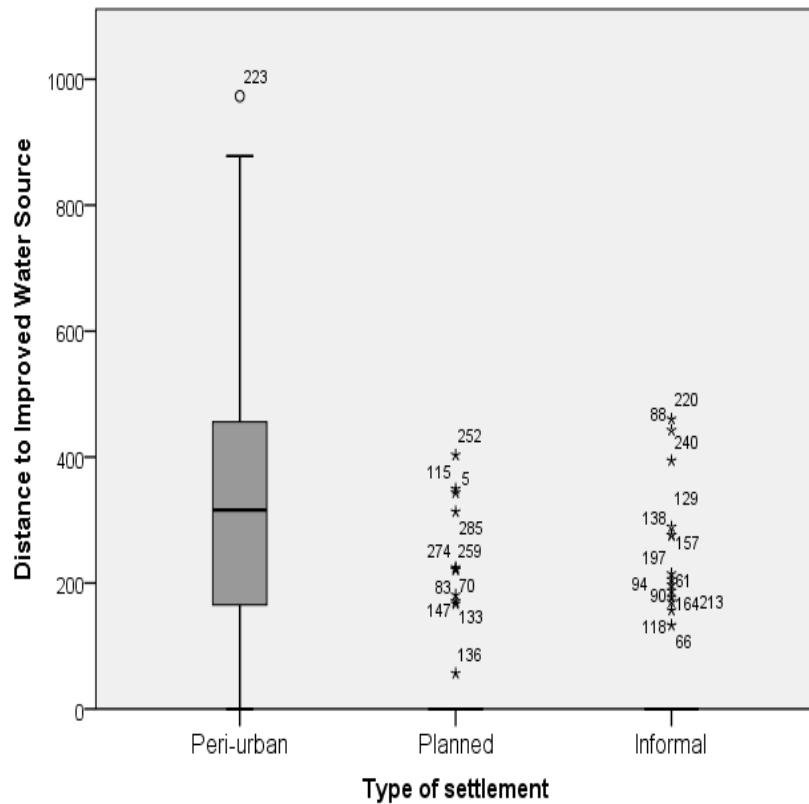
Proximity to drinking water supply infrastructure



- Only about the half (48.3%) of the population are within 200 m from the improved public water,
- 73,2% of the population are within 50m from the pipeline



Pattern of proximity to improved drinking water sources

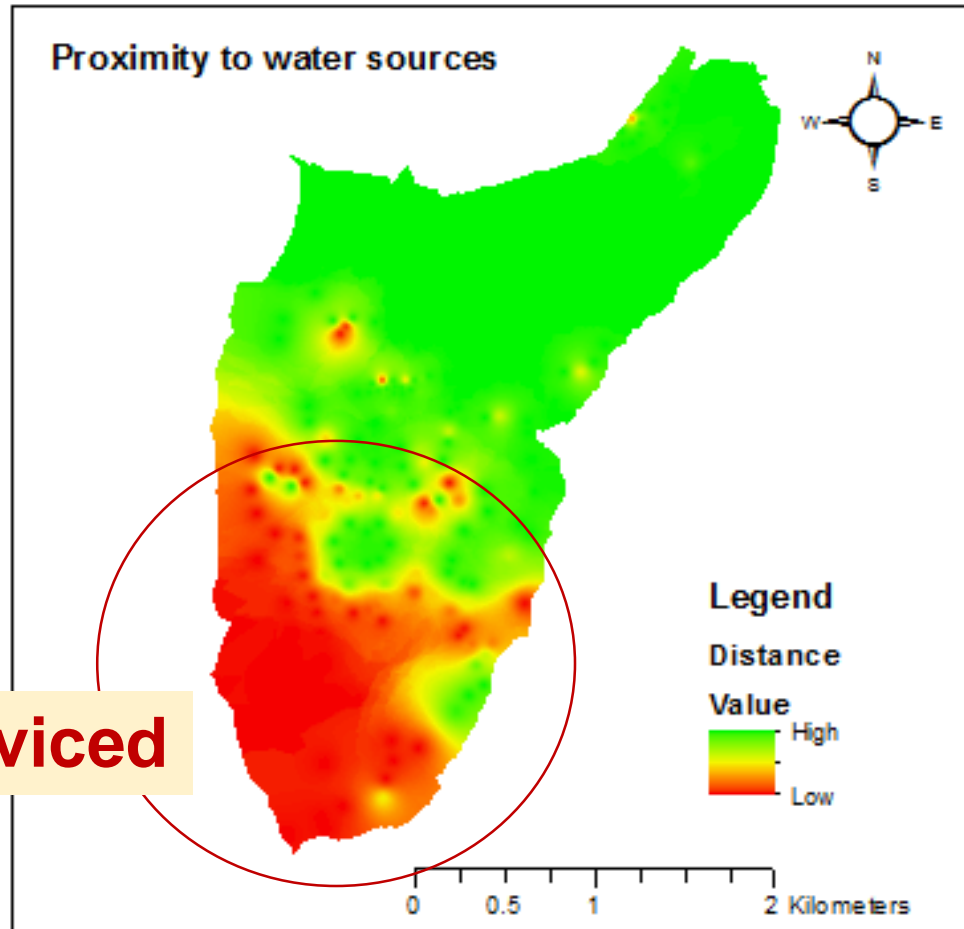


- **Urban areas** (planned and informal) are therefore better serviced than the peri-urban/scattered area;
- **Low income group** is poorly covered by drinking water supply infrastructure

Figure: Distance to drinking water sources within settlements and income groups



Proximity map: overall assessment



- Spatial dissimilarities inside the study area : **Urban** (Planned & informal) **well serviced**.
- Need of **Area-based interventions** to reduce the spatial disparities

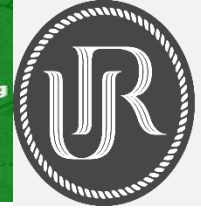
Poorly serviced



AfricaGIS 2019

Innovations in Geospatial Technologies for Achieving
Sustainable Development Goals in Africa

Kigali Conference and Exhibition Village, Rwanda
18 - 22 November 2019



UNIVERSITY of
RWANDA

Thank you!