

# Environmental, Social and Governance

Mapping towards a sustainable future



*THE SOUTHERN AFRICA ESRI USER CONFERENCE 2023*



# Our World

Is a Complex . . .  
Rapidly Changing  
Adapt



Fragile  
Rich in Biodiversity  
. . . Not Well-Known  
. . . And Even Less Understood

The World We Live In  
Highly interdependent Ecosystem  
Increasingly Dominated by Human Activities



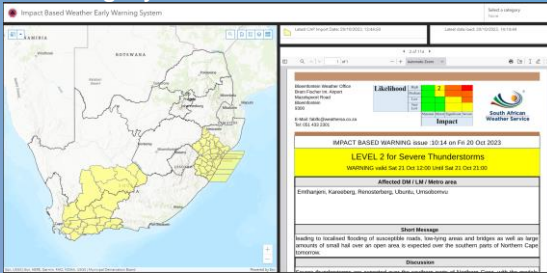
# Environmental and Conservation

## Protected Areas Register



Department Forestry, Fisheries, Environment South Africa

## Impact Based Weather Early Warning System



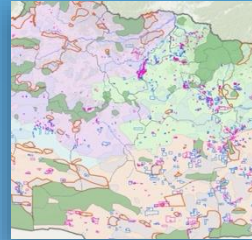
National Disaster Management Centre South Africa

## Oil Spill Damage & Restoration



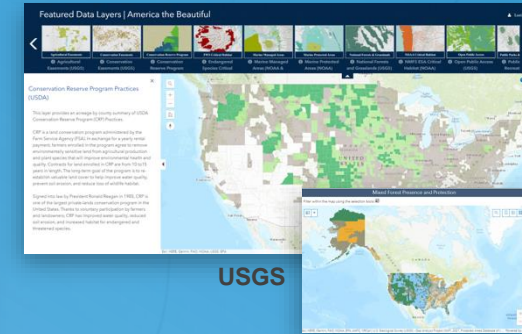
CONIDA Lima Shoreline

## National Conservation Planning



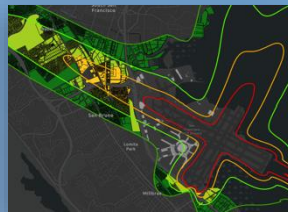
TNC Mongolia Mongolia

## Conservation & Stewardship Atlas America the Beautiful (30 x 30)



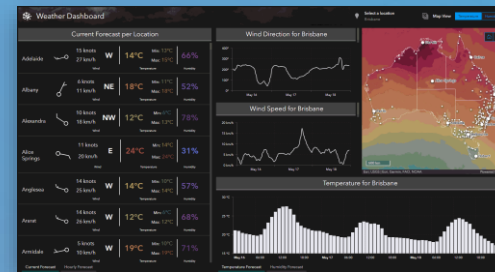
USGS

## Noise Impacts



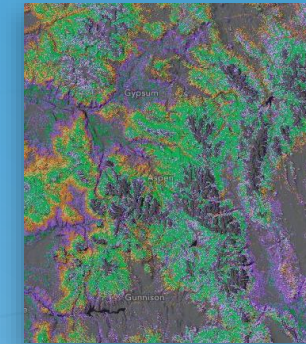
San Francisco Int'l Airport San Francisco Bay, California

## Real-Time Weather Dashboard



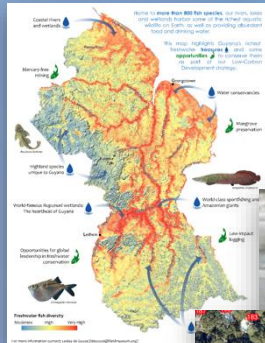
Australia

## Modeling Forest Carbon Pools



Forest Service Colorado

## Freshwater Fish Diversity



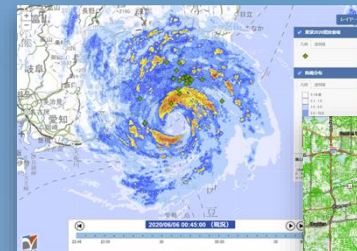
Field Museum of Natural History Guyana

## Sea Turtle Patrol



Amber Kuehn Hilton Head Island, South Carolina

## Typhoon Monitoring



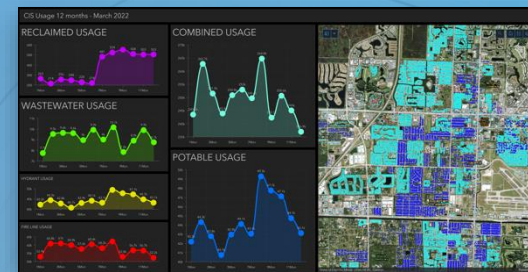
NIED Tsukuba, Ibaraki, Japan

## Extreme Heat Map



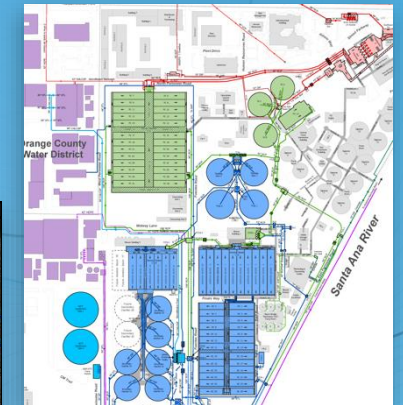
Metropolitan Council Twin Cities, Minnesota

## Monitoring Water Consumption



Water Utilities Department Florida

## Managing Wastewater Facility



Orange County Sanitation District California

# Social Equity

Maps for Census Enumeration

Vulnerable Populations & Health



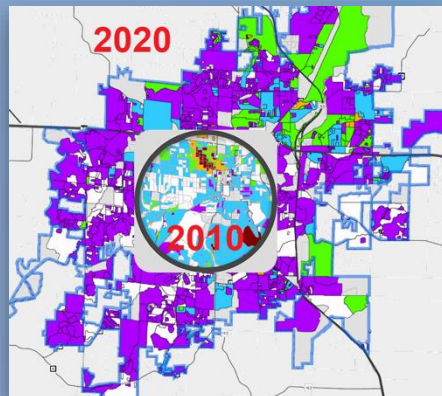
Data Vision Group  
New York City, New York

Transit Access for Socially Vulnerable Communities



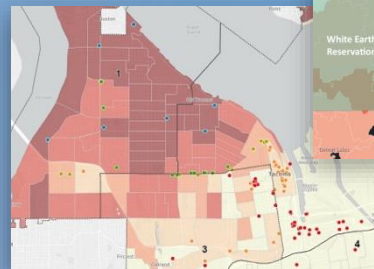
USDOT  
Washington, DC Region

Reapportionment & % Black Population



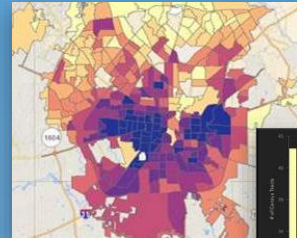
City of Columbia  
Missouri

Grant / Loan Applications & Equity

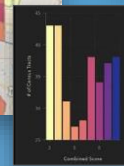


City of Tacoma  
Washington

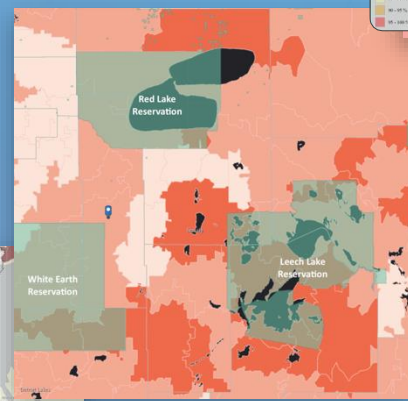
Interactive Equity Atlas



City of San Antonio  
Texas



Arrest Rate & Native American Reservations



FaithX Project  
Bagley, Wisconsin

Power Plant Emissions & Environmental Justice



USEPA

Environmental Justice



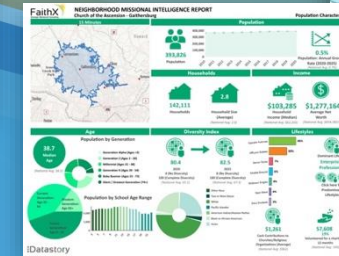
Salt Lake City Department of Public Utilities  
Utah

Children & Poverty



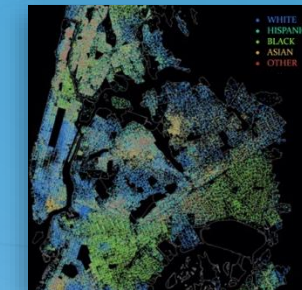
NYS Council on Children and Families  
New York

Neighborhood Demographic Profile



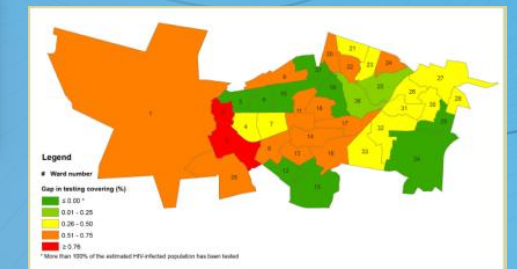
FaithX Project  
Gaithersburg, Maryland

Distribution of Races



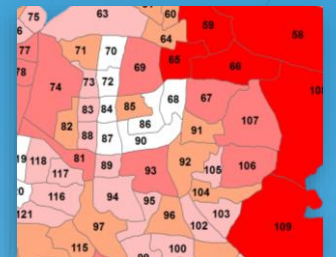
Saturn Power  
New York City, New York

HIV testing coverage by ward



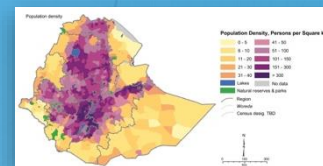
ANOVA Health Institute  
South Africa

Population Density



Shrabanti datta  
Kolkata, West Bengal, India

Population Census



Central Statistical Agency  
Ethiopia

# ESG Drivers

Once a niche idea...

Global principles & regulations

Awareness

... Expectations

Challenging...

External pressure

Modify operations

Responsible

Solutions

ESG is a statement of Ambition!



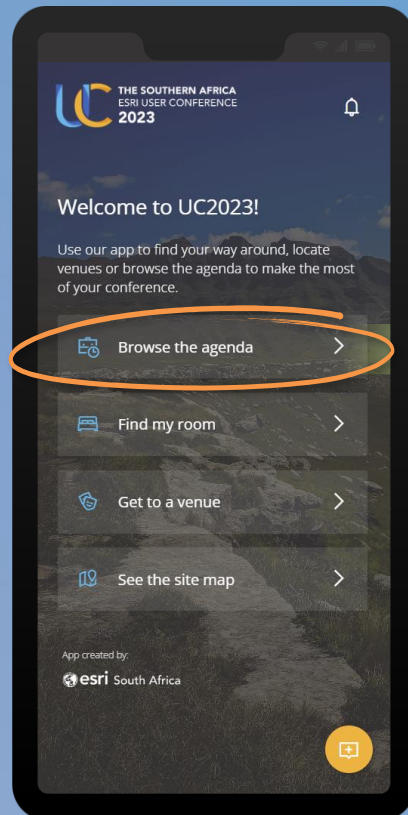
**THE SOUTHERN AFRICA  
ESRI USER CONFERENCE  
2023**

**CONNECTING COMMUNITIES**

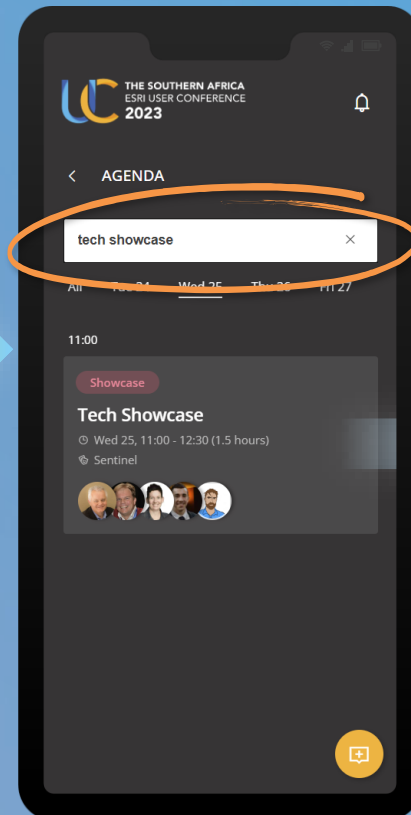
# Please share your feedback in the UC2023 app



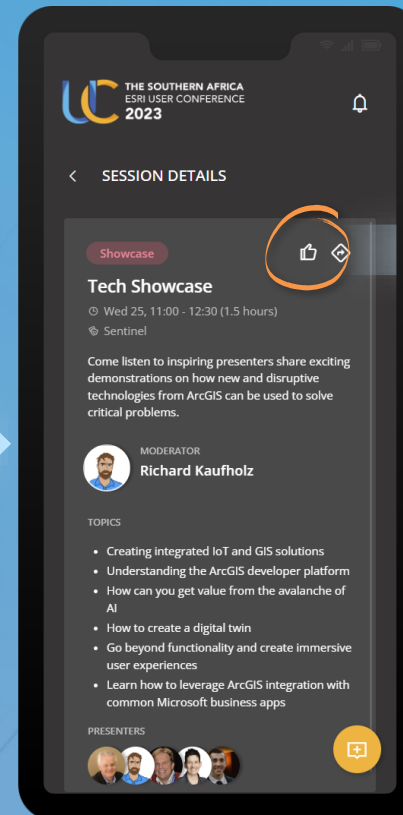
Open  
[uc2023.esri-southafrica.com](https://uc2023.esri-southafrica.com)  
and browse the agenda



Search and select the  
session you attended



Click the “thumbs up”  
icon



Complete and submit  
your review

